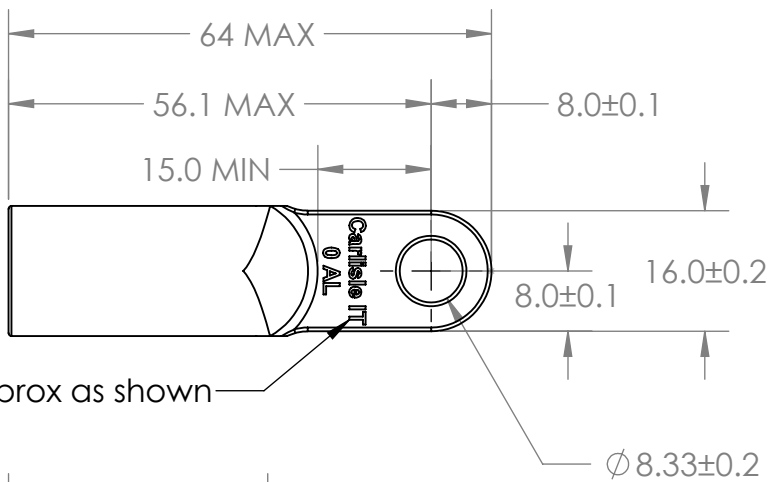
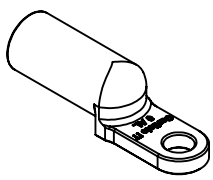
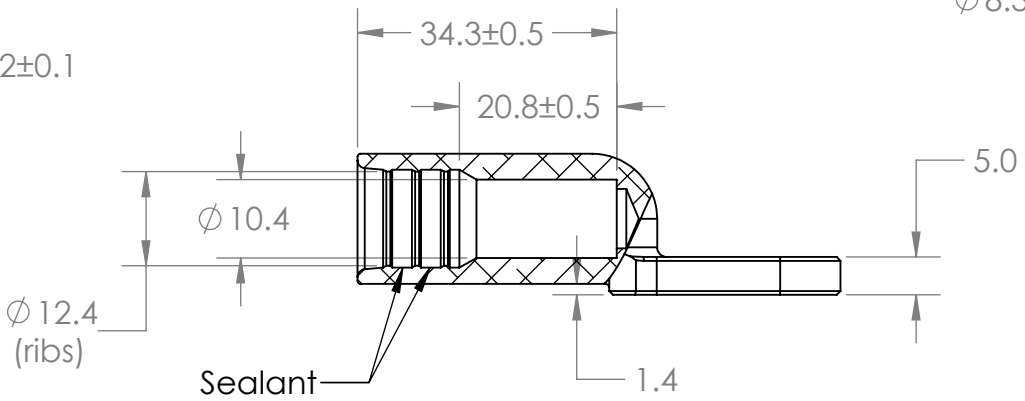
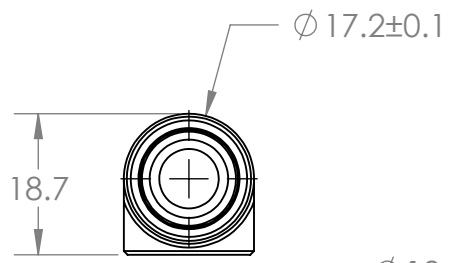


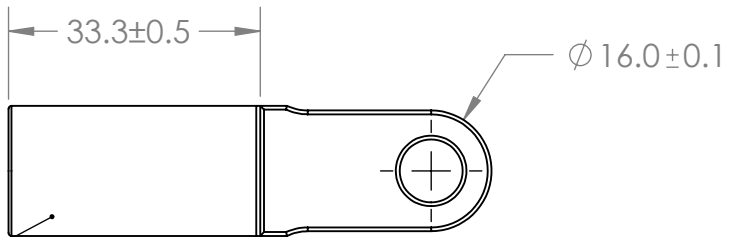
Mass = 20g Max



Legend Approx as shown



Sealant



Dielectric Coating

NOTE:  
1. This Aluminum lug is terminated by CIT Crimp Die P/N 999-63007-200.

ALUMINUM		NICKEL		DIMENSIONS IN INCHES THIRD ANGLE PROJECTION				DESIGN, CONFIGURATION AND MECHANICAL FEATURES REVEALED ON THIS DRAWING ARE THE SOLE PROPERTY OF TENSOLITE A CARLISLE COMPANY AND ARE NOT TO BE DISCLOSED TO OTHER PARTIES WITHOUT EXPRESS CONSENT AND APPROVAL OF TENSOLITE.						
				TOLERANCES UNLESS OTHERWISE SPECIFIED				<b>Tensolite</b> A CARLISLE Company 100 Tensolite Dr. St. Augustine Fl. 32092						
				ANGLES ±2° WHOLE NUMBERS ±0.5 One Place Decimals ±0.25 Two Place Decimals ±0.10				DESCRIPTION Al Lug, 0 gage Straight		PG. 1 OF 1				
MAT'L CODE	MATERIAL DESCRIPTION	FIN CODE	FINISH DESCRIPTION	REV	E.C.O. NO.	DATE	APPR	DRAW	WLA	09/10/2014	FSCM.	92607	NO.	695-18104-001
								ENG.	WLA	09/10/2014				